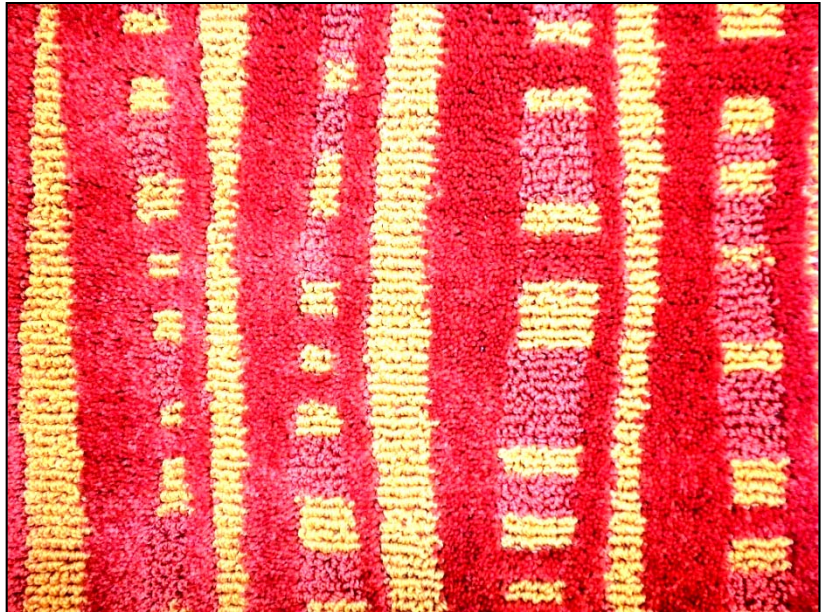
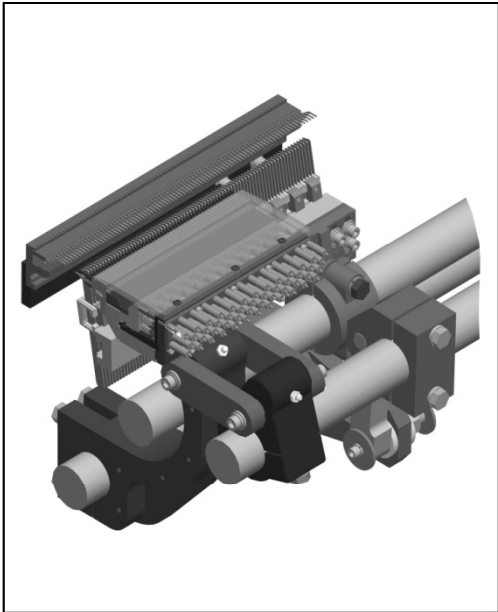




## *Pattern Loop Cut*



- \* **1/12 Gauge PLC**: **20%** more surface density than MLCL for optimum durability & performance in high traffic installations
- \* Ideal machine to serve both the commercial/ contract & hospitality markets
- \* Also available in **5/64 Gauge** (5/32 x 5/32)
- \* Features 2 independent sewing systems: Front- *multi-pile iTuft* Loop Pile x Rear- *multi-pile iTuft* LCL for Full Repeat patterning capability
- \* Optional pattern attachments: iTuft **2E** or Compact Servo Scroll
- \* 2- 1/6 Gauge independently shifting needle bars by **Servo Shifters**
- \* Tuftco fabricated **Tab-Lock** LCL hook modules, featuring **TI** Tungsten-insert hooks for satisfactory, efficient production of LCL patterns with dominant areas of patterned Loop
- \* Tuftco LCL sewing system engineered for immediate reaction time from Loop pile tuft to Cut pile tuft
- \* Optimum pattern definition & lower face weights



**TUFTCO CORPORATION**  
2318 Holtzclaw Avenue  
Chattanooga, TN, USA, 37404  
PH (USA) 423 698 8601  
sales@tuftco.com  
www.tuftco.com